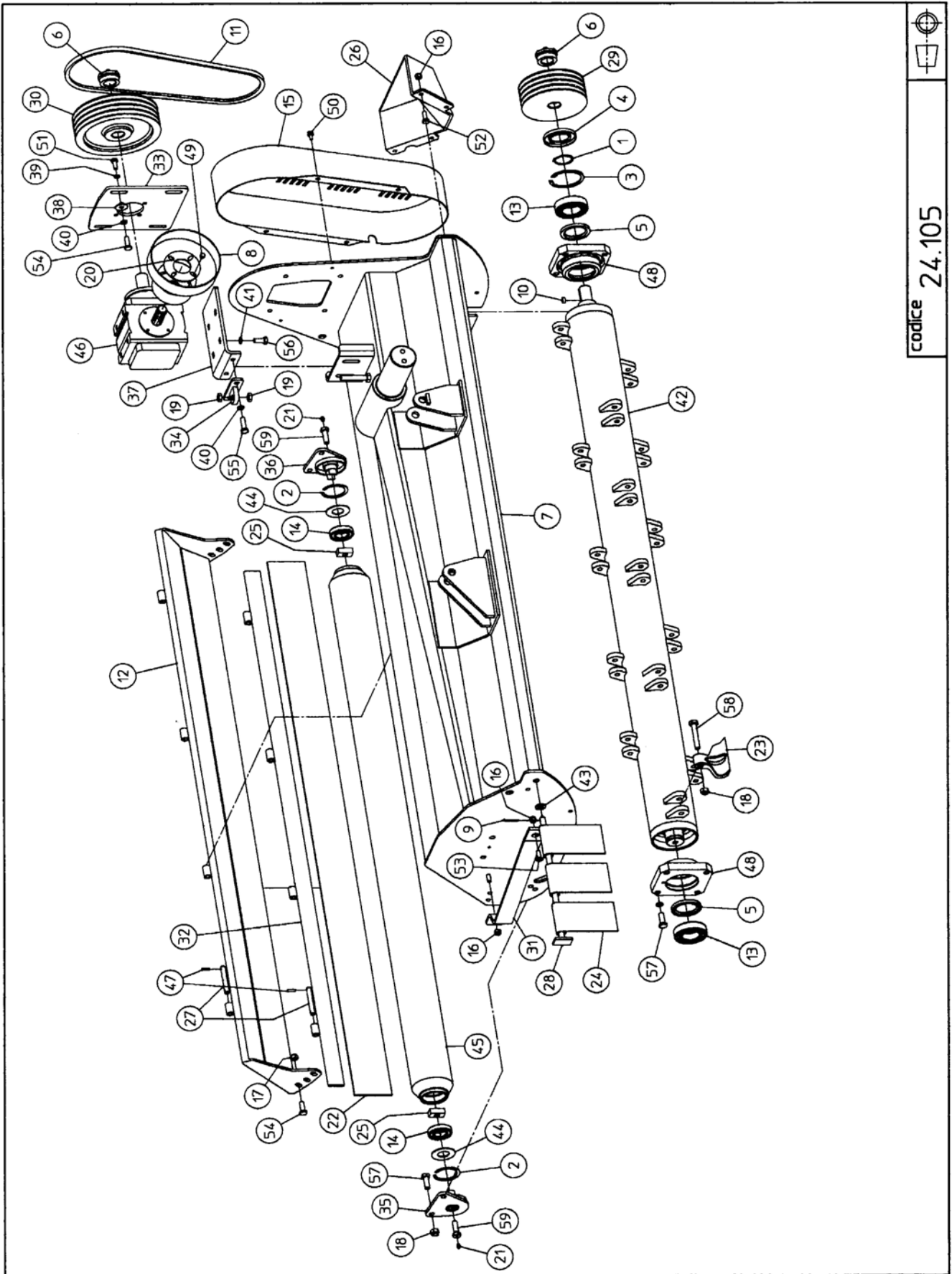


Mod. TA/P 2002 – Standard Rahmen

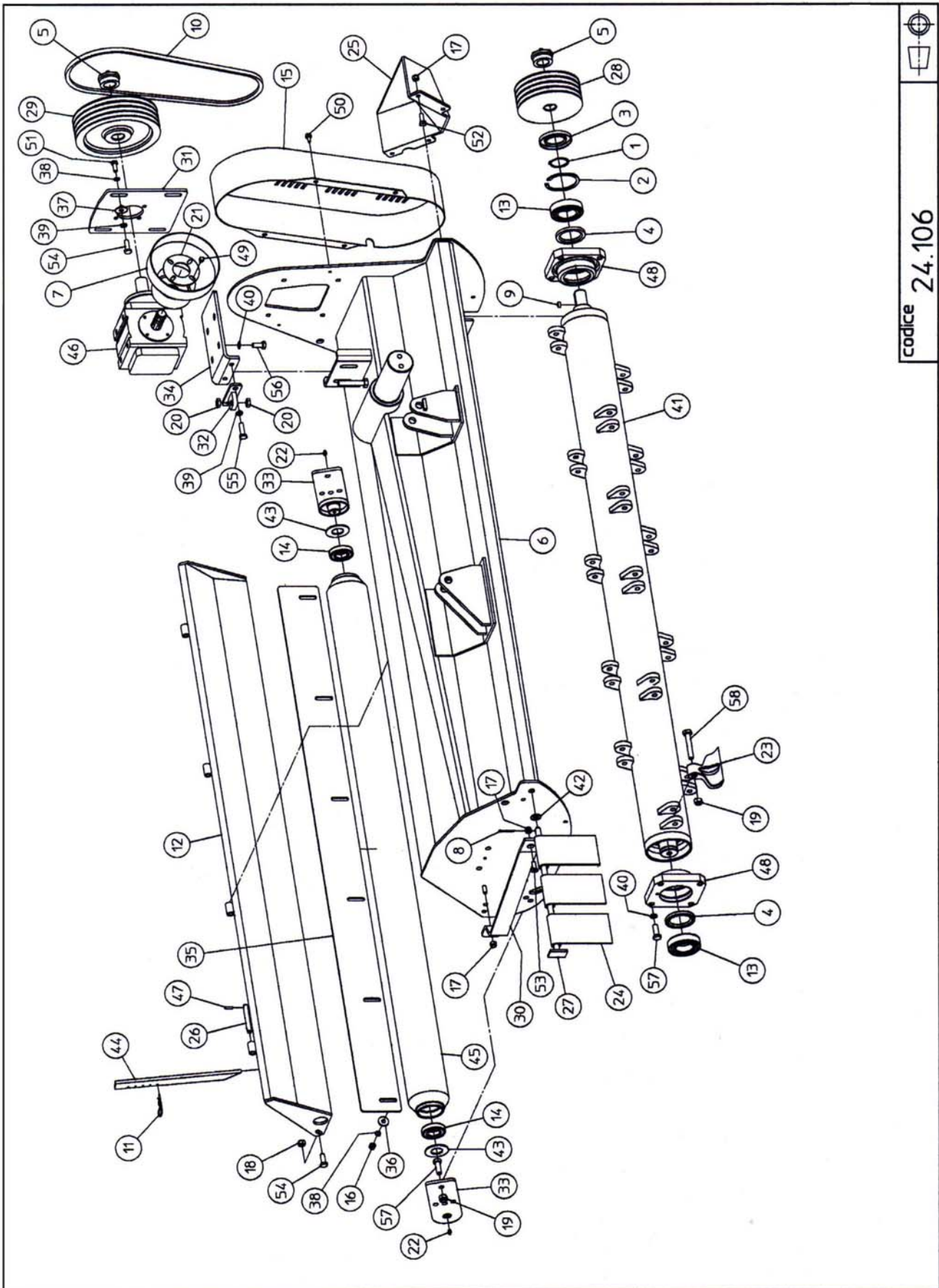


codice 24.105

Mulcher:**Mod. TA-P****fig. 24.105****BERTI MACCHINE AGRICOLE SpA**

Pos.	BEZEICHNUNG	TA-P 160	TA-P 180	TA-P 200	TA-P 220		
1	SEEGERRING	ASE060	ASE060	ASE060	ASE060		
2	SEEGERRING	ASI080	ASI080	ASI080	ASI080		
3	SEEGERRING	ASI110	ASI110	ASI110	ASI110		
4	SIMMERRING	AT06011012	AT06011012	AT06011012	AT06011012		
5	SIMMERRING	AT07010010	AT07010010	AT07010010	AT07010010		
6	RUNDKEIL	CA4065	CA4065	CA4065	CA4065		
7	MULCHERRAHMEN	CC160/2042	CC180/2042	CC200/2042	CC220/2042		
8	SCHUTZ Ø28	CC005	CC005	CC005	CC005		
9	ZAPFEN	CF050060	CF050060	CF050060	CF050060		
10	KEIL	CH1208020	CH1208020	CH1208020	CH1208020		
11	KEILRIEMEN	CIXPB1700	CIXPB1700	CIXPB1700	CIXPB1700		
12	HAUBE, FLACH	CO160/2042	CO180/2042	CO200/2042	CO220/2042		
13	KUGELLAGER	COS02212	COS02212	COS02212	COS02212		
14	KUGELLAGER	CRS06208Z	CRS06208Z	CRS06208Z	CRS06208Z		
15	VERKLEIDUNG	CT/0186	CT/0186	CT/0186	CT/0186		
16	MUTTER	DE12AL6SPGZAB	DE12AL6SPGZAB	DE12AL6SPGZAB	DE12AL6SPGZAB		
17	MUTTER	DE14AL6SPGZAB	DE14AL6SPGZAB	DE14AL6SPGZAB	DE14AL6SPGZAB		
18	MUTTER	DE16AL6SPGZAB	DE16AL6SPGZAB	DE16AL6SPGZAB	DE16AL6SPGZAB		
19	MUTTER	DE18BA6SPGN	DE18BA6SPGN	DE18BA6SPGN	DE18BA6SPGN		
20	FLANSCH	FR/1338	FR/1338	FR/1338	FR/1338		
21	SCHMIERBUCHSE M8x1,25	IN08125DR	IN08125DR	IN08125DR	IN08125DR		
22	GUMMISTREIFEN	LT06130L1600	LT06130L1800	LT06130L2000	LT06130L2200		
23	"P" SCHLEGEL	MP/0008	MP/0008	MP/0008	MP/0008		
24	FRONTSCHUTZ	PA05/1342	PA05/1342	PA05/1342	PA05/1342		
25	SICHERUNGSBLECH	PB/2005	PB/2005	PB/2005	PB/2005		
26	VERKLEIDUNGSSCHUTZ	PC/2040	PC/2040	PC/2040	PC/2040		
27	BOLZEN	PE0150110	PE0150110	PE0150110	PE0150110		
28	FRONTSCHUTZ STIFT	PE0181630	PE0181830	PE0182030	PE0182230		
29	KEILRIEMENSCHLEIBE	PG212G4	PG212G4	PG212G4	PG212G4		
30	KEILRIEMENSCHLEIBE	PG280G4ML	PG280G4ML	PG280G4ML	PG280G4ML		
31	SEITENSCHUTZ	PL100600	PL100600	PL100600	PL100600		
32	GUMMIHALTERUNG	SP041520	SP041720	SP041920	SP042120		
33	SEITENPLATTE, GETRIEBE	PR/1985	PR/1985	PR/1985	PR/1985		
34	EINSTELLUNGPLATTE	PR08/0009	PR08/0009	PR08/0009	PR08/0009		
35	WALZENPLATTE RE	PR139DX/2017	PR139DX/2017	PR139DX/2017	PR139DX/2017		
36	WALZENPLATTE LI	PR139SX/2017	PR139SX/2017	PR139SX/2017	PR139SX/2017		
37	HALTERUNGPLATTE, GETRIEBE	PSS/1984	PSS/1984	PSS/1984	PSS/1984		
38	SCHEIBE	RF1442FN	RF1442FN	RF1442FN	RF1442FN		
39	GROWER SCHEIBE Ø12	RG12XXARN	RG12XXARN	RG12XXARN	RG12XXARN		
40	GROWER SCHEIBE Ø14	RG14XXARN	RG14XXARN	RG14XXARN	RG14XXARN		
41	GROWER SCHEIBE Ø16	RG16XXARN	RG16XXARN	RG16XXARN	RG16XXARN		
42	ROTOR	RC159160/0013	RC159180/0014	RC159200/0015	RC159220/0016		
43	SCHEIBE Ø18	RP18XXFN	RP18XXFN	RP18XXFN	RP18XXFN		

Mod. TAP/F - Chassis

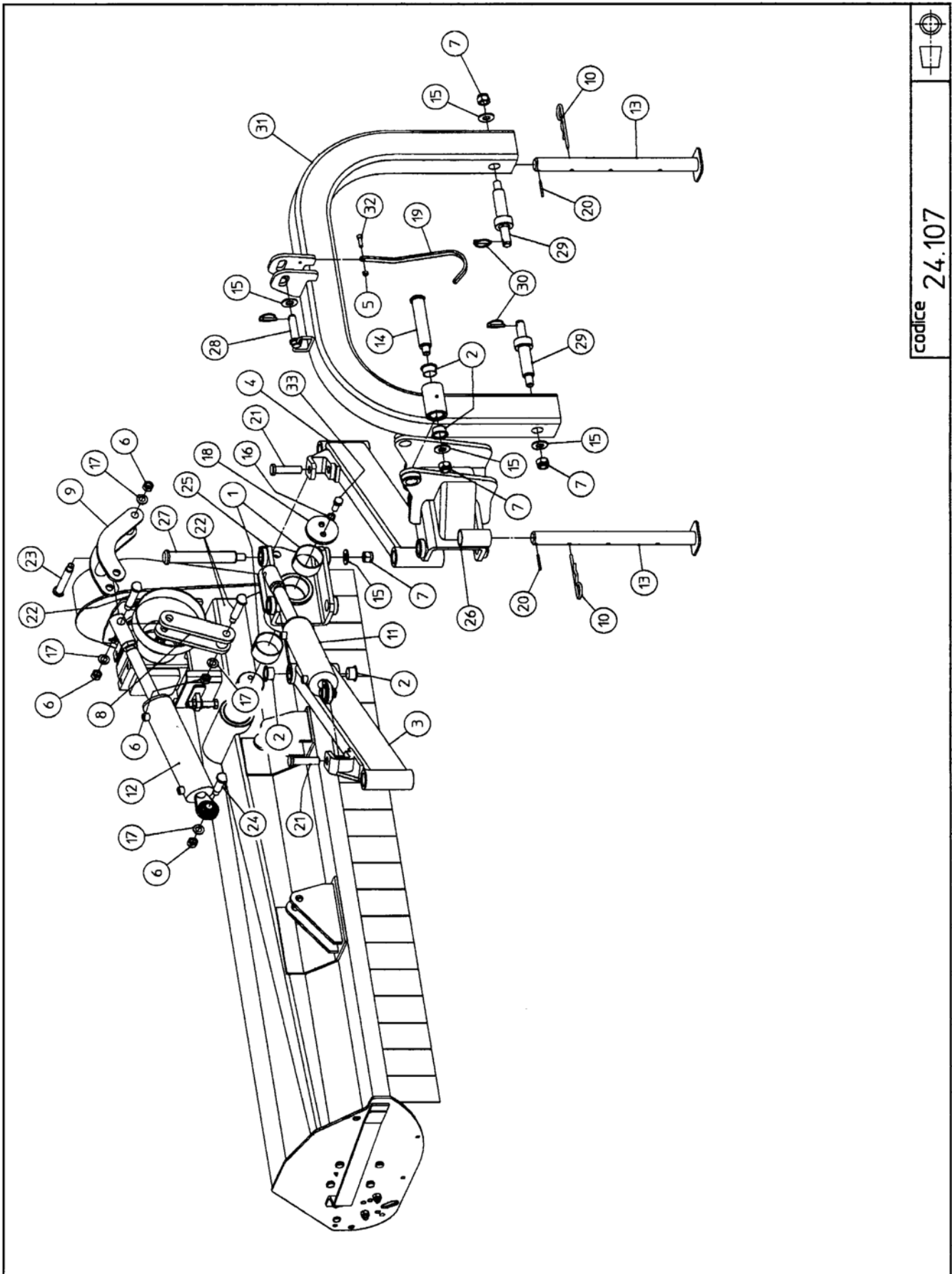


codice 24.106

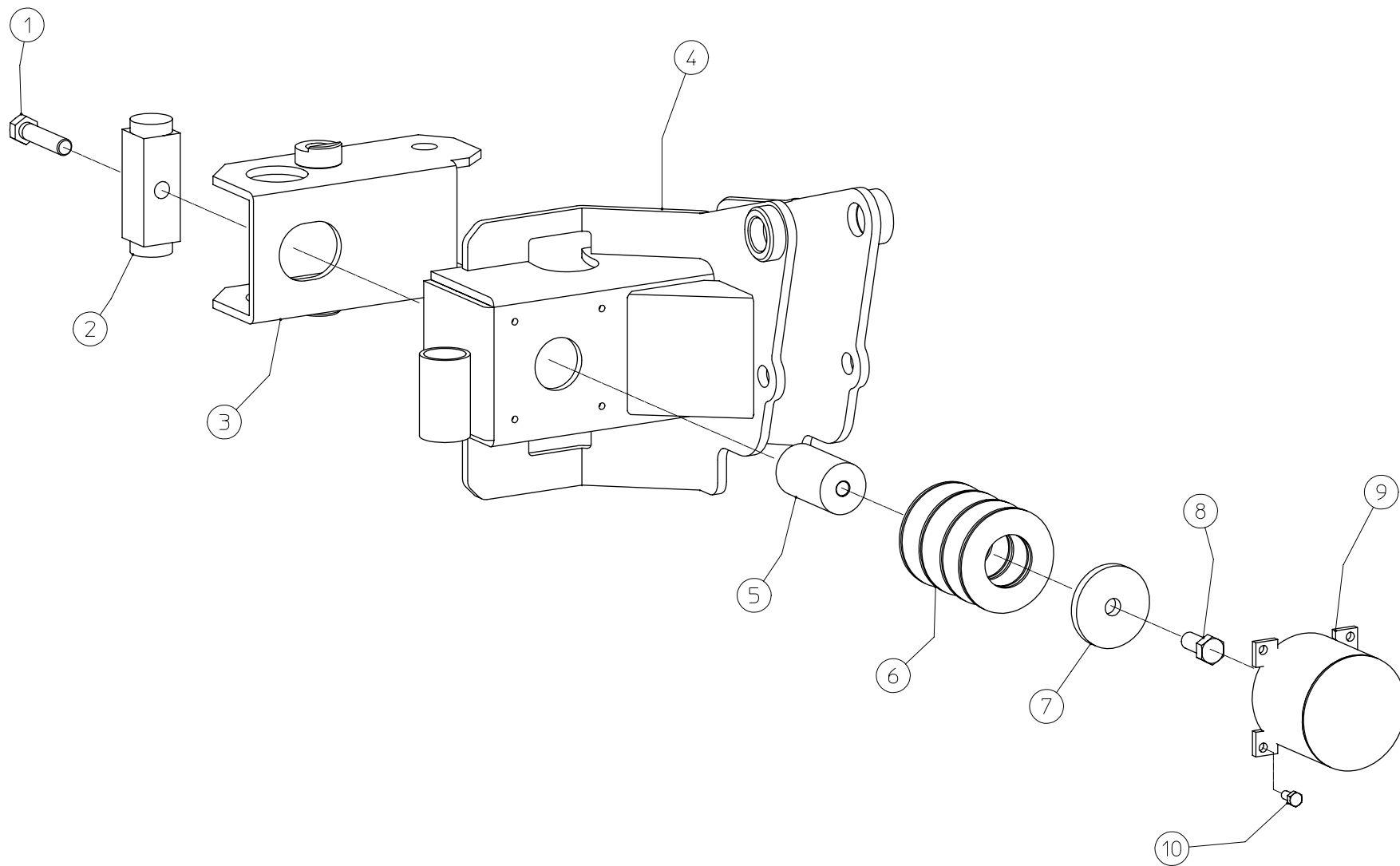
Kode : Mod. TA/PF – (mit Sammelrechen)**fig. 24.106****BERTI MACCHINE AGRICOLE srl**


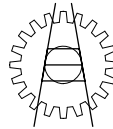
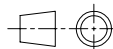
Pos.	BESCHREIBUNG	TA/PF 160	TA/PF 180	TA/PF 200	TA/PF 220	
1	SEEGER RING e 60	ASE060	ASE060	ASE060	ASE060	
2	SEEGER RING i 110	ASI110	ASI110	ASI110	ASI110	
3	DICHTRING	AT06011012	AT06011012	AT06011012	AT06011012	
4	DICHTRING	AT07010010	AT07010010	AT07010010	AT07010010	
5	KEIL	CA4065	CA4065	CA4065	CA4065	
6	HAUBE	CC160/2043	CC180/2043	CC200/2043	CC220/2043	
7	GEGENHAUBE Ø28	CC005	CC005	CC005	CC005	
8	SPLINT	CF050060	CF050060	CF050060	CF050060	
9	SCHLÜSSEL 12x8x20	CH1208020	CH1208020	CH1208020	CH1208020	
10	RIEMEN	CIXPB1700	CIXPB1700	CIXPB1700	CIXPB1700	
11	SPLINT MIT FEDER	CM04Z	CM04Z	CM04Z	CM04Z	
12	HABUBE MIT SAMMELRECHEN	CO160/1311	CO180/1311	CO200/1311	CO220/1311	
13	KUGELLAGER	COS02212	COS02212	COS02212	COS02212	
14	KUGELLAGER	CRS06208Z	CRS06208Z	CRS06208Z	CRS06208Z	
15	DECKEL	CT/0186	CT/0186	CT/0186	CT/0186	
16	MUTTER	DE12AL6SPGN	DE12AL6SPGN	DE12AL6SPGN	DE12AL6SPGN	
17	MUTTER	DE12AL6SPGZAB	DE12AL6SPGZAB	DE12AL6SPGZAB	DE12AL6SPGZAB	
18	MUTTER	DE14AL6SPGZAB	DE14AL6SPGZAB	DE14AL6SPGZAB	DE14AL6SPGZAB	
19	MUTTER	DE16AL6SPGZAB	DE16AL6SPGZAB	DE16AL6SPGZAB	DE16AL6SPGZAB	
20	MUTTER	DE18BA6SPGN	DE18BA6SPGN	DE18BA6SPGN	DE18BA6SPGN	
21	VERSTÄRKUNGSPLATTE	FR/1338	FR/1338	FR/1338	FR/1338	
22	FETTBÜCHSE M10x1	IN101XXDR	IN101XXDR	IN101XXDR	IN101XXDR	
23	SCHLEGEL "P"	MP/0008	MP/0008	MP/0008	MP/0008	
24	FRONTSCHUTZ	PA05/1342	PA05/1342	PA05/1342	PA05/1342	
25	DECKELSCHUTZ	PC/2040	PC/2040	PC/2040	PC/2040	
26	SCHANIERZAPFEN	PE0150110	PE0150110	PE0150110	PE0150110	
27	FRONTSCHUTZ- ZAPFEN	PE0181630	PE0181830	PE0182030	PE0182230	
28	KEILRIEMENSCHLEIBE	PG212G4	PG212G4	PG212G4	PG212G4	
29	KEILRIEMENSCHLEIBE	PG280G4	PG280G4	PG280G4	PG280G4	
30	SEITLICHER SCHUTZ	PL100600	PL100600	PL100600	PL100600	
31	PLATTE	PR/1985	PR/1985	PR/1985	PR/1985	
32	EINSTELLBARE PLATTE	PR08/0009	PR08/0009	PR08/0009	PR08/0009	
33	WALZENPLATTE	PR/2204	PR/2204	PR/2204	PR/2204	
34	GETRIEBEHALTERUNG	PSS/1984	PSS/1984	PSS/1984	PSS/1984	
35	ABSTREIFER	RF061580	RF061780	RF061980	RF062180	
36	UNTERLEGSCHLEIBE 12x36	RF1236FN	RF1236FN	RF1236FN	RF1236FN	
37	UNTERLEGSCHLEIBE 14x42	RF1442FN	RF1442FN	RF1442FN	RF1442FN	
38	UNTERLEGSCHLEIBE GROWER Ø12	RG12XXARN	RG12XXARN	RG12XXARN	RG12XXARN	
39	UNTERLEGSCHLEIBE GROWER Ø14	RG14XXARN	RG14XXARN	RG14XXARN	RG14XXARN	
40	UNTERLEGSCHLEIBE GROWER Ø16	RG16XXARN	RG16XXARN	RG16XXARN	RG16XXARN	
41	ROTOR	RC159160/0013	RC159180/0014	RC159200/0015	RC159220/0016	
42	UNTERLEGSCHLEIBE Ø18	RP18XXFN	RP18XXFN	RP18XXFN	RP18XXFN	
43	WALZENSCHUTZ	RP4080	RP4080	RP4080	RP4080	

Mod. TA/P Serie 2002 – Anbaubock mit Anti-shock

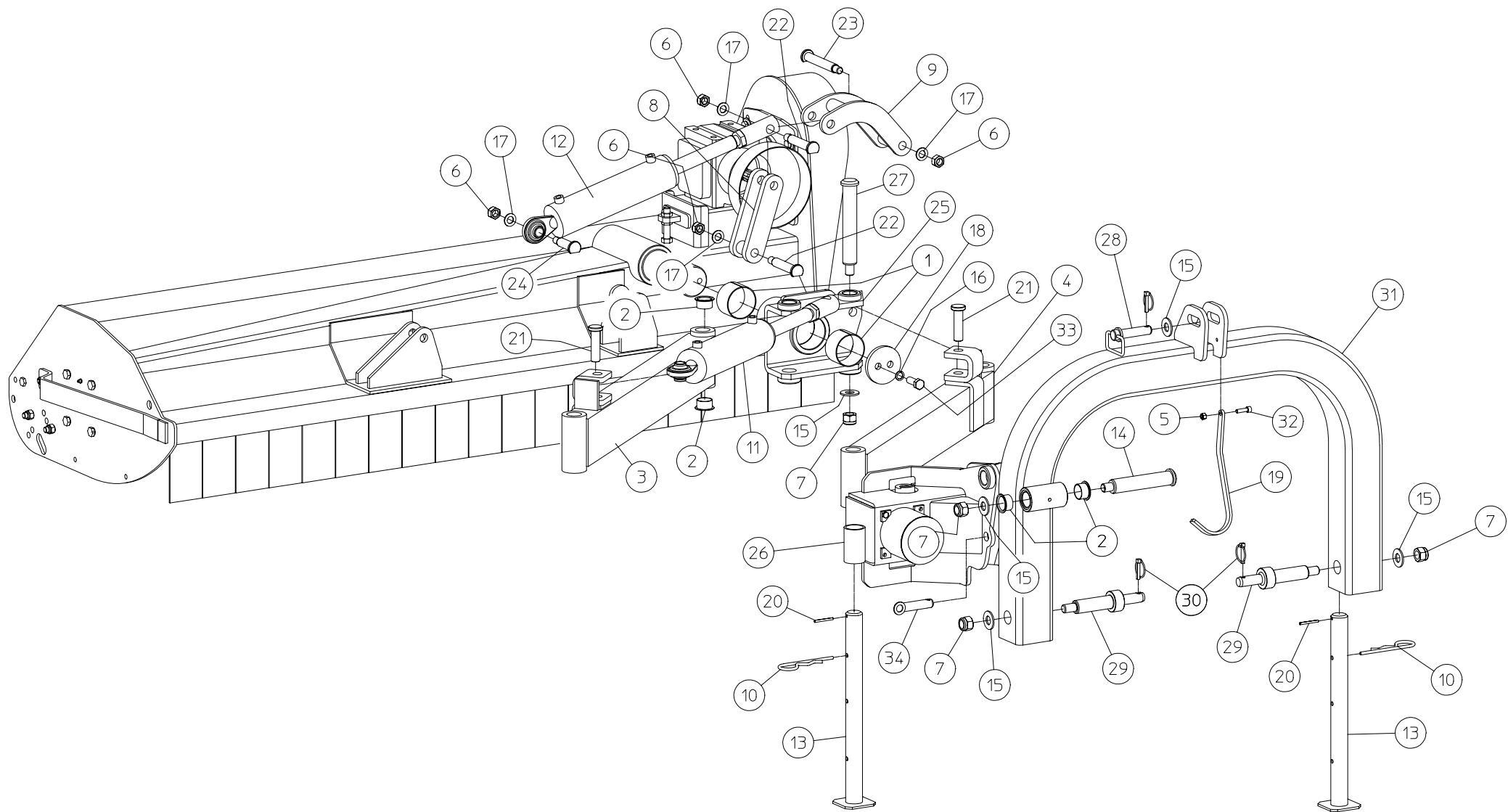


codice 24.107


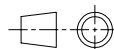


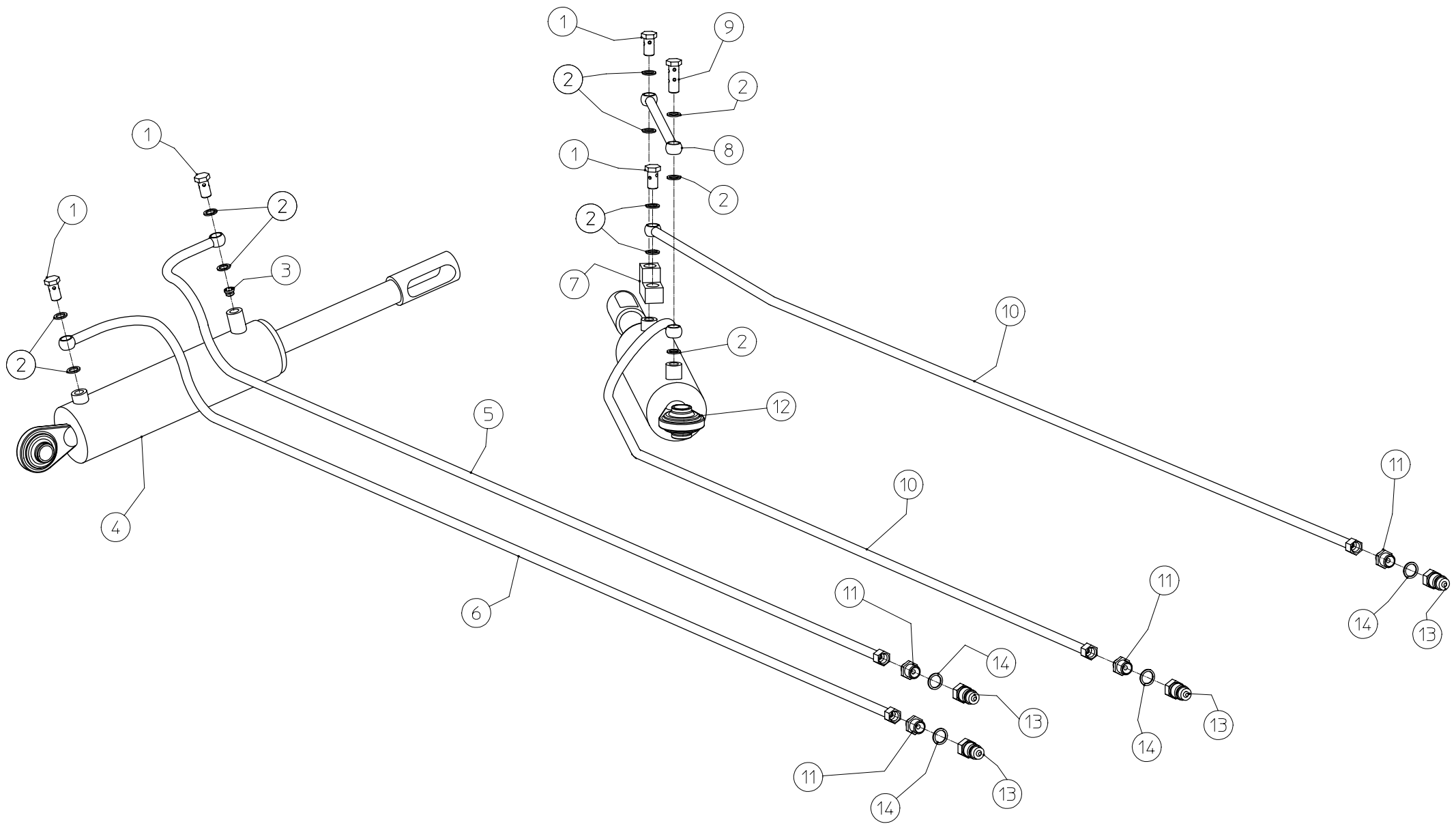
 macchine agricole srl Caldiero (VR)		mod. TA-P	dis.n° 24.122
		mat.	tratt.
den. Esplosivo anti-shock TA-P 2005			
data 18/11/2005	dis. ANDREA	codice 24.122	


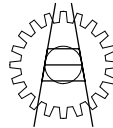
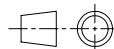
© Le informazioni contenute nel presente documento sono di proprietà della BERTI MACCHINE AGRICOLE SRL e non possono essere riprodotte o trasmesse a terzi in alcun modo senza esplicita approvazione scritta della BERTI MACCHINE AGRICOLE SRL o di un suo rappresentante debitamente autorizzato.



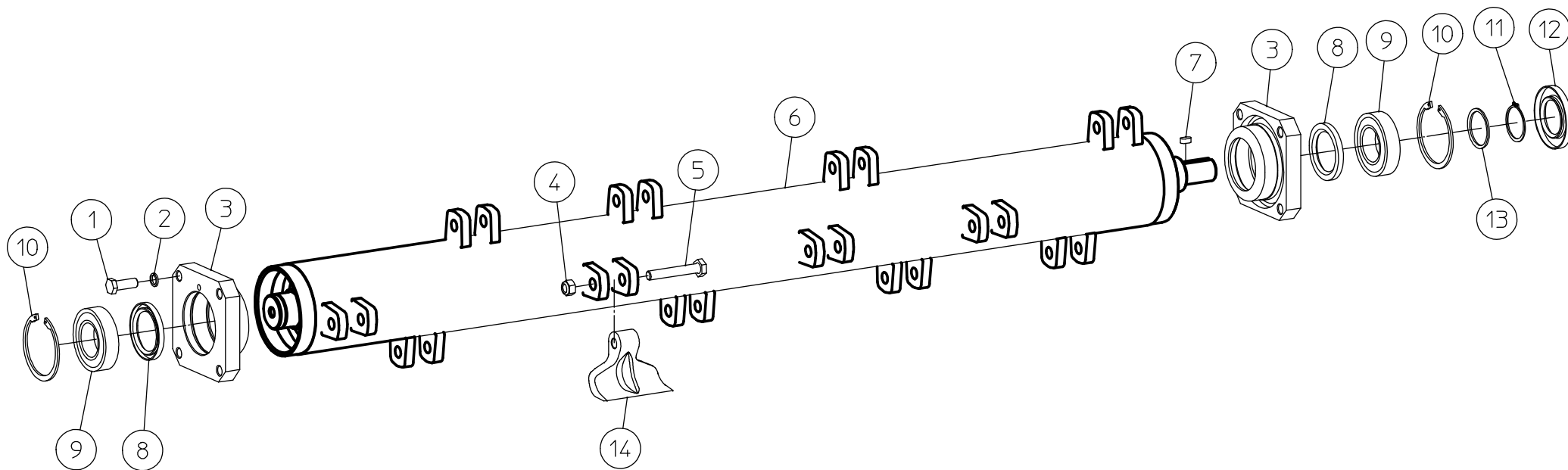
© Le informazioni contenute nel presente documento sono di proprietà della BERTI MACCHINE AGRICOLE SRL e non possono essere riprodotte o trasmesse a terzi in alcun modo senza esplicita approvazione scritta della BERTI MACCHINE AGRICOLE SRL o di un suo rappresentante debitamente autorizzato.


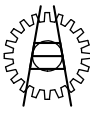
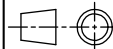
	mod. TA-P	dis.n° 24.123
	mat.	tratt.
den. Esploso TA-P con anti-shock 2005		
data 18/11/2005	dis. ANDREA	codice 24.123
		



 macchine agricole srl Caldiero (VR)		mod. TA TA-S TA-L TA-P	dis.n° 24.128
		mat.	tratt.
den. Esploso circuito idraulico serie 2006			
data 23/11/2006	dis. ANDREA	codice 24.128	

© Le informazioni contenute nel presente documento sono di proprietà della BERTI MACCHINE AGRICOLE SRL e non possono essere riprodotte o trasmesse a terzi in alcun modo senza esplicita approvazione scritta della BERTI MACCHINE AGRICOLE SRL o di un suo rappresentante debitamente autorizzato.



 macchine agricole spa Caldiero (VR)		mod. VARI		
		mat. _____		
des. Esploso rotore TIPO "A"				
data 02/09/08	dis. Andrea	cod. 00.04.6	rev. 00	
<small>© Le informazioni contenute nel presente documento sono di proprietà della BERTI MACCHINE AGRICOLE SPA e non possono essere riprodotte o trasmesse a terzi in alcun modo senza esplicita approvazione scritta della BERTI MACCHINE AGRICOLE SPA o di un suo rappresentante debitamente autorizzato.</small>				

